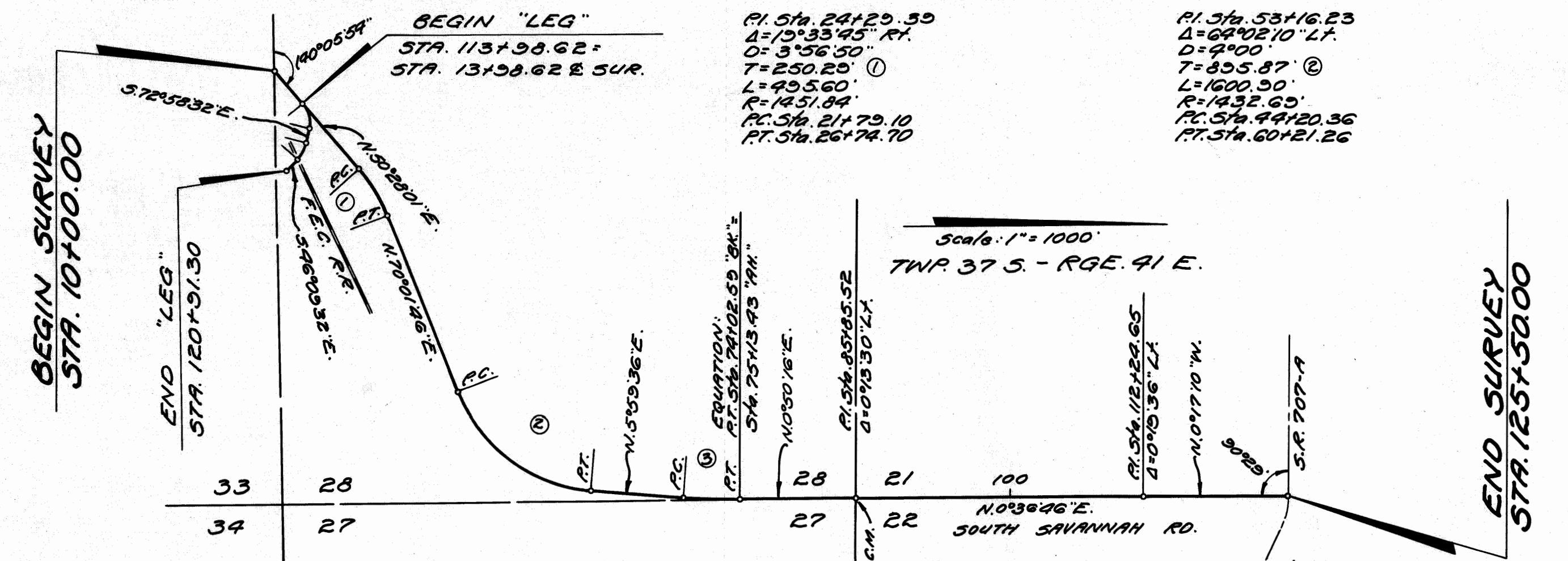


121075



P.I. Sta. 24+29.39  
 $\Delta = 15^{\circ}33'45''$  RT.  
 $D = 3^{\circ}56'50''$   
 $T = 250.20'$  ①  
 $L = 495.60'$   
 $R = 1451.84'$   
 P.C. Sta. 21+79.10  
 P.T. Sta. 26+74.70

P.I. Sta. 53+16.23  
 $\Delta = 64^{\circ}02'10''$  LT.  
 $D = 9^{\circ}00''$   
 $T = 895.87'$  ②  
 $L = 1600.90'$   
 $R = 1432.60'$   
 P.C. Sta. 44+20.36  
 P.T. Sta. 60+21.26

P.I. Sta. 71+44.99  
 $\Delta = 5^{\circ}09'20''$  LT.  
 $D = 1^{\circ}00''$   
 $T = 257.96'$  ③  
 $L = 515.56'$   
 $R = 5729.65'$   
 P.C. Sta. 68+87.03  
 P.T. Sta. 74+02.59

"LEG"  
 P.I. Sta. 115+29.78  
 $\Delta = 56^{\circ}33'27''$  RT.  
 $T = 131.16'$   
 $L = 240.67'$   
 $R = 243.81'$   
 P.C. Sta. 113+98.62  
 P.T. Sta. 116+39.29

"LEG"  
 P.I. Sta. 118+65.97  
 $\Delta = 26^{\circ}49'00''$  RT.  
 $T = 85.07'$   
 $L = 167.03'$   
 $R = 356.87'$   
 P.C. Sta. 117+80.90  
 P.T. Sta. 119+47.94

Scale: 1" = 100'  
 TWP. 37 S. - RGE. 41 E.

Date: March 15, 1967

We, Ralph Davis, as Executive Director of the State Road Department of the State of Florida, and F.K. Strickland, as Secretary of the State Road Department of the State of Florida, do hereby certify that this map is the Official Map of Location and Survey of a portion of Section 89504, designated as a part of State Road 5-723 in Martin County, Florida: Said portion of Section 89504 extending from the South line of Section 28, Township 37 South, Range 41 East Northeasterly and Northerly along South Savannah Road to State Road 707-A, including Leg in Section 28, Township 37 South, Range 41 East.

Prepared and adopted by the State Road Department of the State of Florida under provision of Section 335.02, Florida Statutes of 1955.

Ralph Davis  
 Executive Director, State Road Department

Attest: F.K. Strickland  
 Secretary, State Road Department

Approved: [Signature]  
 Engineer of Rights of Way  
 Sec. 89504

Dorothy Pince  
 Clerk of the Circuit Court  
 Martin County, Florida  
 Rd. 5-723 Martin Co. H.T.R.

FILED & RECORDED  
 MARTIN COUNTY, FLA.  
 MAR 29 PM 2:55  
 Dorothy Pince